



CASA | ACAE

Canadian Alliance of Student Associations

Presentation to University of Alberta Students' Union
August 15th, 2023



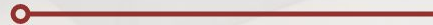
Nice to meet you!



Wasiimah Joomun
**Director of Operations & Membership;
Interim Executive Director**

Table of Contents

- 1. What is CASA?**
- 2. Governing Documents & Structure**
- 3. What does CASA do?**
- 4. Records of Success**
- 5. A Year At CASA**
- 6. What does this all mean for UASU?**





1. What is CASA?

CASA at a Glance



365 000+
Students

25
Members

7
Board Members

One
Vote Per School

Mission

Canadian Alliance of Student Associations

“Through its member-driven structure and grassroots approach, CASA’s mission is to advocate for students using policy development and research, awareness campaigns, government relations, and partnerships with other stakeholders.”

Vision



Accessible

Affordable

Innovative

High Quality

Values

Non-partisan

Easy-In
Easy-Out

Member Driven

Transparency

Research-
Based



CASA | ACAE

1 Vote Per
Institution

Members



Observers



Membership Fee Structure

Number of students	Cost per full-time equivalent (FTE) student
1 to 6,000	\$3.48
6,001 to 12,000	\$3.20
12,001 to 20,000	\$2.96
20,001 and above	\$2.63

***Membership fees shall be subject to a maximum of \$59,533 and a minimum of \$5,777 per fiscal year, subject to slight annual adjustments for inflation.**



2. Governing Documents & Structure

Governing Documents

External

**Non-Profit
Corporations
Act**

By-Laws



Internal

**2021-2024
Strategic Plan**

**Operating
Procedures**

Strategic Plan: Pillars

Membership

Advocacy

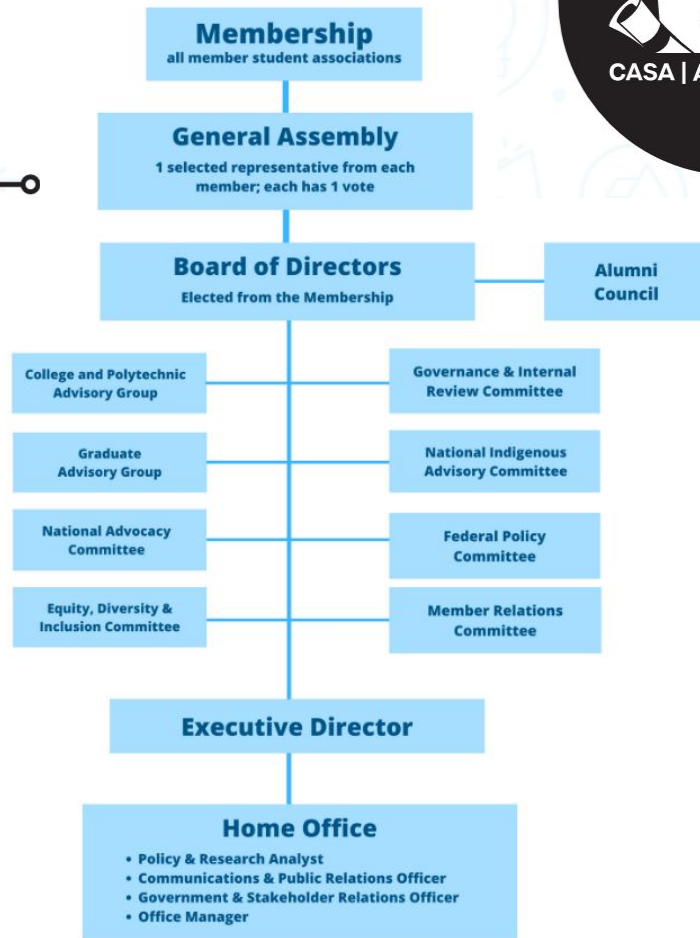
**Policy &
Research**

**Public
Relations**

Governance

Our Structure

- **Our Members provide direction to our Board of Directors at our general assemblies**
- **Our Board is composed of:**
 - Board Chair
 - Treasurer
 - Secretary
 - Director of Policy
 - Director of Advocacy
 - Director of Membership
 - Director of EDI
- **CASA's Board provides direction to the Executive Director, who manages Home Office staff**



Member-Driven

- **Membership is comprised of:**
 - Primary & Secondary delegates
- **Responsible for:**

Representing
your Students
at a National
level

Reviewing &
assessing
CASAs actions

Ensuring
compliance to
the governing
documents

Electing CASA's
board and
committee
representatives

Attending CASA
Conferences to
bring UASU's
perspective

Meeting with
federal MPs and
politicians



The Board



The board is comprised of:

- Chair, Secretary, Treasurer, Director of Advocacy, Director of Membership, Director of EDI, Director of Policy

Responsible for:

Overseeing
CASA's
Day-to-Day

Creating
Annual Action
Plan

Ensuring
Member-
Driven Focus

Chair
Committees

CASA Committees

- **Each committee is:**
 - Made up of delegates from members
 - Connected to the board of directors through a board representation
 - Responsible for developing a work plan in conjunction with the Board of Directors' Action Plan
 - Responsible for reports to membership at each CASA Conference

Committees

**Federal Policy
Committee**

**National
Advocacy
Committee**

**Governance &
Internal Review
Committee**

**Equity,
Diversity &
Inclusion
Committee**

**Member
Relations
Committee**

**National
Indigenous
Advocacy
Committee**

**Colleges &
Polytechnics
Advisory
Committee**

**Graduates
Advisory
Committee**

Staff

- **Responsible for:**
 - Working in compliance to the governing documents and membership's will
 - **We work on student federal advocacy for you between CASA conferences**

**Executive
Director**

**Member
Relations Officer**

**Policy &
Research
Analyst**

**Government &
Stakeholder
Relations Officer**

**Communications
& Creative
Content Officer**

A group of diverse people are gathered around a round table in a meeting room. A man wearing a yellow turban and a blue shirt is speaking to the group. Other people are listening attentively. The room has large windows and a blue tablecloth. The text "3. What does CASA do?" is overlaid in white on the image.

3. What does CASA do?

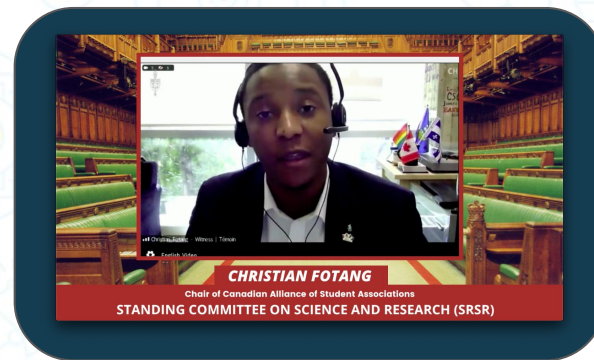
Advocacy at CASA



Policy & Research



Meetings & Lobbying



Consultation



Partnerships

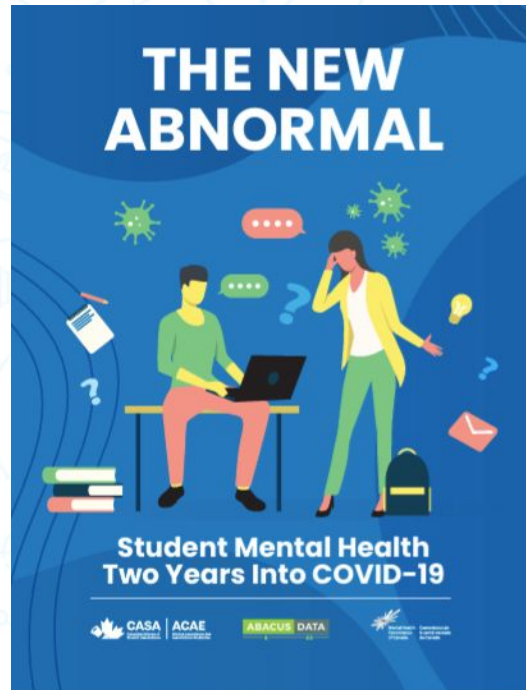


Media Engagement



Campaigns

Policy & Research Papers



Policy Library Highlights

- [Educational materials](#)
- [International students](#)
- [Mental Health](#)
- [Student employment](#)
- [Student financial aid](#)
- [Student research](#)
- [Latest Publication 2022 - The New Abnormal](#)

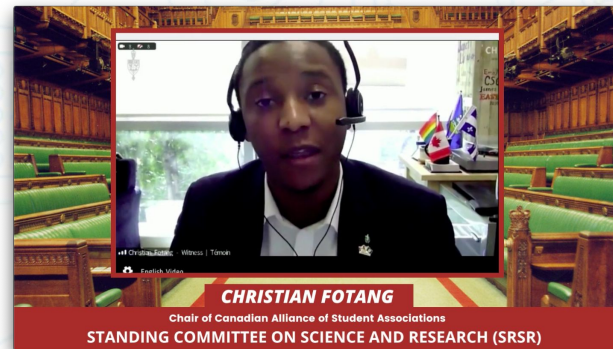
Lobby Meetings

- Meet with Members of Parliament (MPs), Senators, Ministers, and any others who have the power to influence public policy related to post-secondary education
- Ask for the policy changes you want and explain why they are needed!



Parliamentary Committees

- Parliamentary committees make policy recommendations to the government after studying the issue and listening to witnesses
- Being asked to appear as a witness before a committee is a great honour as well as an opportunity to consult with students directly!



UEQ Partnership



- **Union Etudiante de Québec**

- 9 student associations - 87,000 students
- Graduate & Undergraduate students

- **Partnership**

- Since May 2017
- Strong representation of Quebec students
- Neither UEQ or CASA has voting rights at the other's institution



National Indigenous Advocacy Committee

- One member per CASA school
- Co-Chaired by two NIAC-Members who are elected by consensus
- Attend's CASA's annual NIAC Retreat
- Are invited to attend CASA's Advocacy Week in Ottawa in November



Campaigns



2 million students matter.
You matter.

Vote in the Canadian Federal
Election on October 19.

**Get Out The
VOTE**



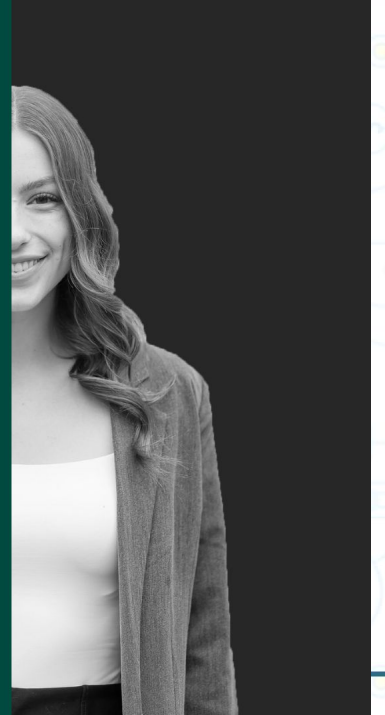
#CloseTheGaps

Campaign 2023

#HalfYourCSG

- Tuition cost is not the only cost associated with attending post-secondary
- Asking the government to make the doubling of Canada Student Grants permanent

**This is half
of Ashley
McDougal's
story**





4. Record of Success

International Student Working Hours



CASA
Canadian Alliance of
Student Associations

ACAE
Alliance canadienne des
associations étudiantes



CASA met with the Parliamentary Secretary to the Minister of IRCC in October 2022 to discuss International Students issues

OTTAWA, October 7th, 2022 - Immigration, Refugees and Citizenship Canada has [announced](#) that starting from November 15, 2022, until December 31, 2023, international students with approved study permits will be able to work more than 20 hours per week in off-campus employment. Students across Canada applaud this change, as this means that international students will be able to earn more while studying, helping them offset tuition and living costs and gain valuable work experience.

International Student Working Hours



As a follow-up to the announcement, CASA's Chair and Director of EDI were invited to a consultation with Minister of Immigration, Refugees and Citizenship, Sean Fraser to discuss the impacts this policy has on students.

Fun Fact: Minister Fraser is a former CASA delegate and is featured in several photos in the CASA home office from when he was President of CASA Member School St.FX.

Definition of a Disability: Canada Student Financial Assistance Program

- Extended disability supports under the CSFA Program to include those with a persistent or prolonged disability. Additionally
- Increased flexibility for documentation that can be accepted when applying for CSFA Program disability supports.

"Expanding the Canada Student Financial Assistance Program to include students with persistent or prolonged disabilities is an important step in improving equitable access to post-secondary education across Canada. Recognizing the lived experiences of students with disabilities is key to ensuring that post-secondary education is accessible, affordable, innovative, and of the highest quality."

– Chair of the Board for the Canadian Alliance of Student Associations (CASA) and Vice President External of the University of Alberta Students' Union, Christian Fotang

CASA recommends:

- » The federal government increase the value of the CSG for Students with Permanent Disabilities by 50%, in line with recent CSG changes, and tie the future value of the grant to the Consumer Price Index.
- » The CSLP review its definition of “permanent disabilities,” in consultation with stakeholders, to ensure that it better meets the diverse needs of students including those with disabilities, prolonged and/or episodic conditions, and mental health problems and illnesses.
- » The CSLP offer a medical leave option of at least two years, to allow borrowers studies for health ng repayment or This leave should me assistance

CASA's Successes last 2 years

Elimination on the interest on Federal student loans

\$9 billion COVID aid package to postsecondary students & recent graduates

Launch of The National Standard for Mental Health and Well Being for post secondary students

Doubling of Canada Student Grants for 2021-22 & 2022-23 academic years

Read about our [wins](#) & [publications](#) on our website (casa-acae.ca)

A close-up, slightly blurred photograph of a large pile of colorful LEGO bricks. The bricks are in various colors including red, blue, green, and yellow. The lighting is soft, and the focus is on the central text.

5. A Year at CASA

CASA 22-23 Timeline



A large, classical-style building with a central dome and columns, likely a university building, with people walking in the foreground. The building has a prominent dome with a smaller dome on top, and the years '1862' and '1867' are visible on the facade. The foreground shows a paved walkway with several people walking, some carrying backpacks. There are trees and greenery around the building.

**7. What does this all mean
for UASU?**

Why CASA?

**Representing UASU
Students at a
national level in
Ottawa**

**Attendance at
CASA conferences
- can take on
leadership roles
on priorities**

**Participation in
CASA committees
and working
groups**

**Advanced
stakeholder relations
- your executives can
thus focus on more
internal issues and
CASA builds on the
external relationships**

**Access to
professional
training, advocacy
resources, and
student-union
networks**

**Member-Drive
& Easy-In Easy
Out**



Stay Updated With CASA



: www.casa-acae.ca



: @casaacae



: @CASAACAE



: Canadian Alliance of
Student Associations

Questions, comments, queries?

FEEL FREE TO EMAIL US

Wasiimah,
members@casa.ca